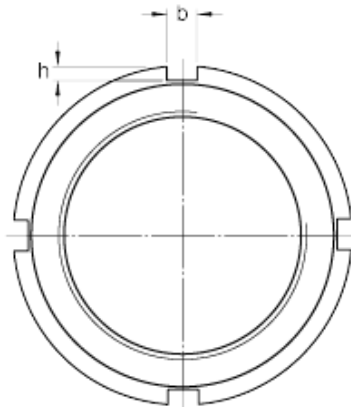
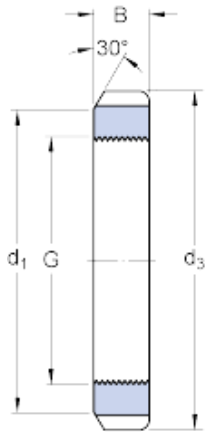




GF BEARING-SINGAPORE LTD.



skf KML 40 Lock nuts requiring a keyway
(metric)

Bearing No. KML 40

G	M 200x3
d ₃	240 mm
B	29 mm
d ₁	222 mm
b	18 mm
h	8 mm
Axial static load carrying capacity	625 kN
Mass lock nut	2.6 kg
Associated spanner	TMFN 30-40

KML 40 Bearing 2D drawings and 3D CAD models